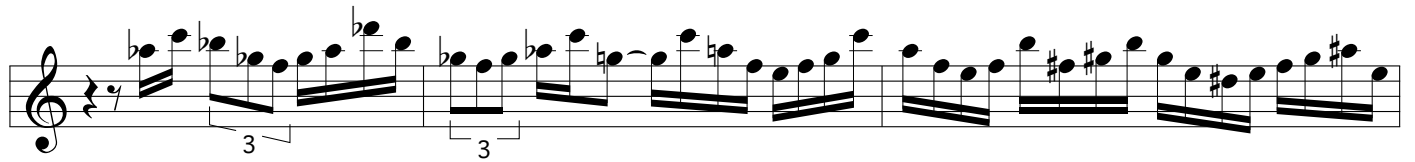
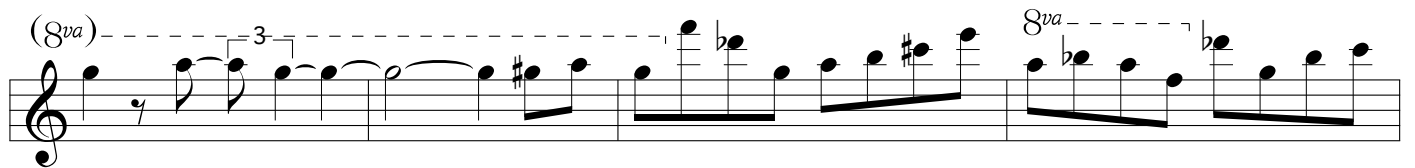
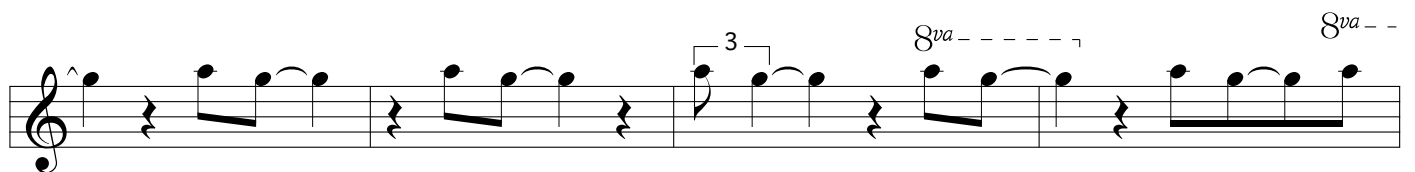
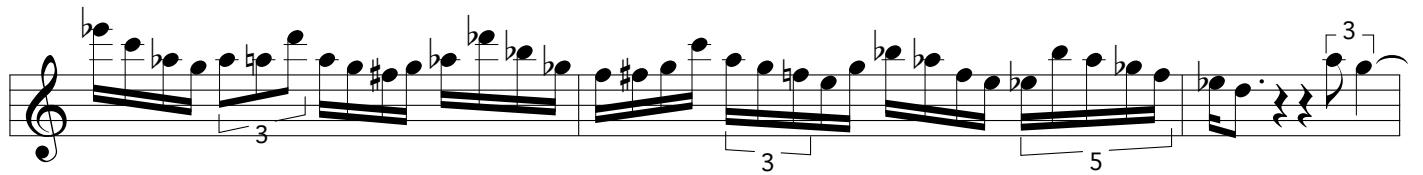
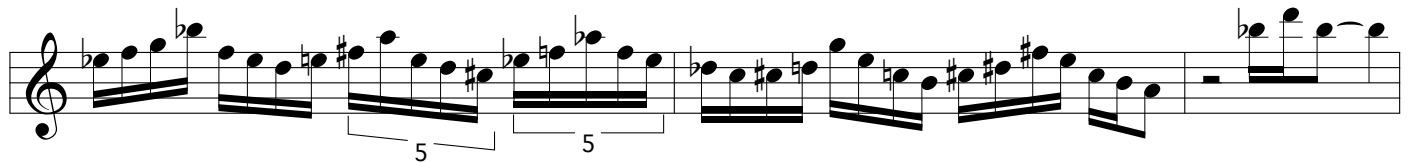


The image displays ten staves of musical notation for a solo. The notation is written in treble clef and includes various musical elements:

- Staff 1:** Features several triplet markings (indicated by a '3' above a bracket) over eighth notes.
- Staff 2:** Starts with a large **A⁷** chord symbol. It contains a triplet of eighth notes and a triplet of quarter notes.
- Staff 3:** Includes a triplet of eighth notes and a triplet of quarter notes.
- Staff 4:** Contains a triplet of eighth notes and a triplet of quarter notes.
- Staff 5:** Features a triplet of eighth notes and a triplet of quarter notes.
- Staff 6:** Shows a triplet of eighth notes and a triplet of quarter notes.
- Staff 7:** Includes a triplet of eighth notes and a triplet of quarter notes.
- Staff 8:** Contains a triplet of eighth notes and a triplet of quarter notes.
- Staff 9:** Features a triplet of eighth notes and a triplet of quarter notes.
- Staff 10:** Includes a quintuplet (marked with a '5') and a sextuplet (marked with a '6') of eighth notes.



A⁷



8va

3

3

3

6

5

3

(8va)

8va

Multiphonic

(8va)

8va

6

3

5

8va

8va

3

3

The image displays a musical score for a solo piece, consisting of four staves of music in treble clef. The first staff features a complex melodic line with a 5-measure and a 7-measure bracketed section. The second staff includes a triplet of eighth notes. The third staff continues the melodic development. The fourth staff concludes with a double bar line and empty staves.